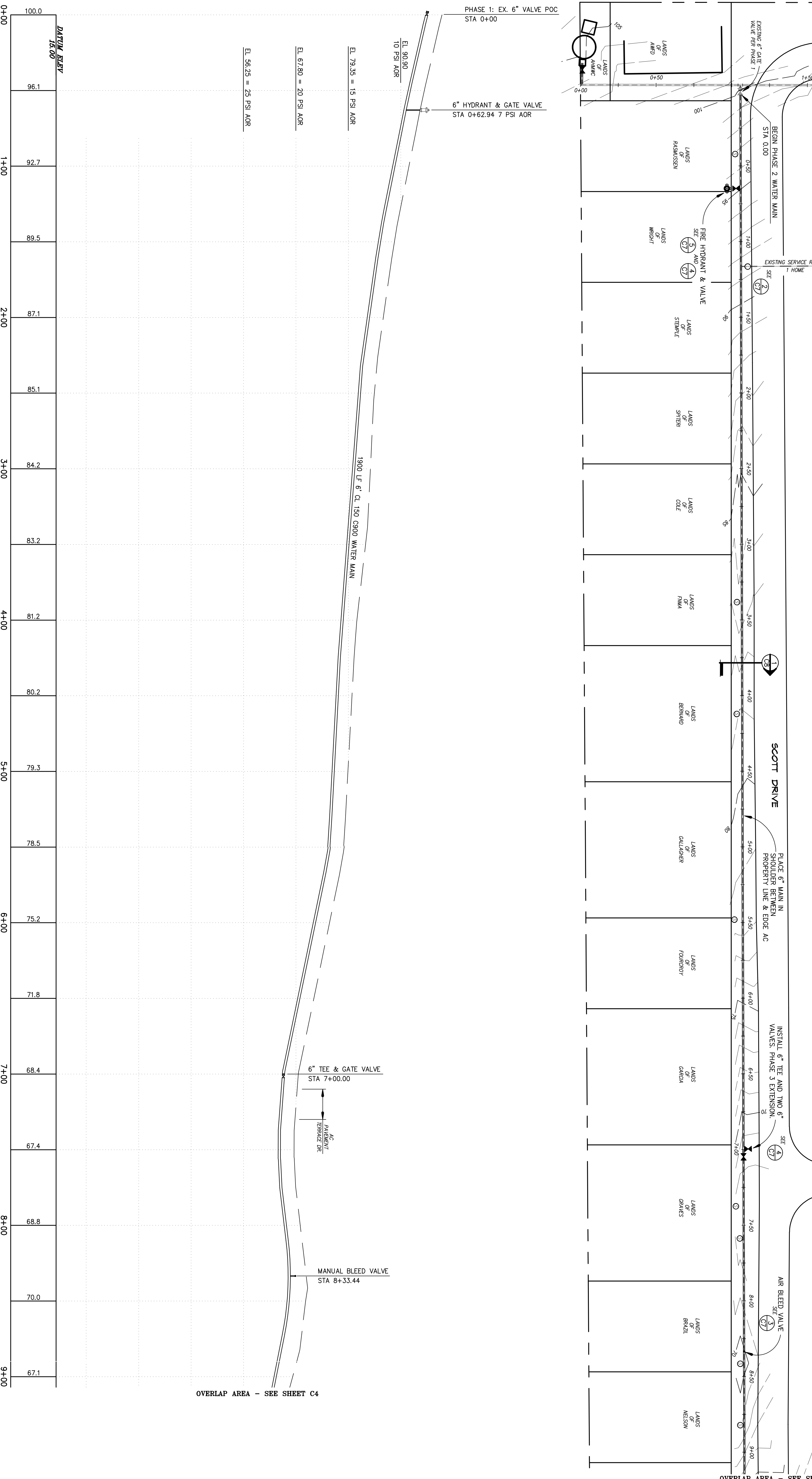


LEGEND

- FOUND INDIVIDUAL SERVICE LOCATION
- LATERAL FOR OFFSET SERVICES
- EXISTING SERVICE RUN
- PHASE 2 6" CL 150 C900 WATER MAIN
- PHASE 1 6" CL 150 C900 WATER MAIN
- LANDS OF ERNSTER LEON
- LANDS OF BAY
- LANDS OF TOMASKILL
- LANDS OF REMOLOS

GENERAL NOTES:
FIELD VERIFY EXISTING UTILITY LOCATIONS, TYPES AND SIZES.
NOT ALL SERVICES WERE FOUND - MAY NEED TO POTHOLE TO LOCATE.

SCALE IN FEET
CONTOUR INTERVAL: 1 FOOT
CONTOUR DATUM: ASSUMED



OVERLAP AREA - SEE SHEET C4

OVERLAP AREA - SEE SHEET C4

<p>NO. DATE DESCRIPTION BY</p> <p>REVISIONS</p>	<p>NST Engineering, Inc. 485 Riverside Drive St. Paul, MN 55112 (651) 267-5173</p>
<p>DRAWN BY: KMB CHECKED BY: JAM DATE: 9/19/11 JOB No. 2011-041</p>	<p>PLAN / PROFILE PHASE 2 - SCOTT DRIVE</p>
<p>FUTURE - NOT A PART OF PHASE 1</p>	
<p>SHEET C3 OF 8 JOB No. 11-41</p>	